



**POSIWIRE®**  
**Accessories**  
**for WS® Position Sensors**



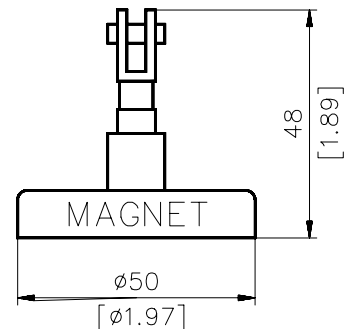
**Magnetic clamp MAG1**

The magnetic clamp MAG1 is an easy way to fasten the measurement cable to ferromagnetic materials on the moving parts. The user can easily change from one application to another using this device.

Minimum Adhesive Force:  $\geq 200$  N (on bare steel)

**Note:** Coated surfaces will reduce the adhesive force.

Order Code: MAG1

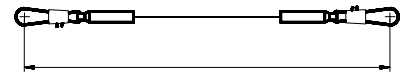


**Cable extension SV1**

Cable extension for ASM position sensors with cable clip

Order Code: SV1 – M

Cable length in m (from 7.9 in. (0.2 m))



**Float**

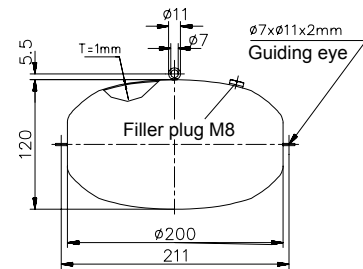
For best accuracy half the volume of the float has to be immersed in the fluid. The float should be filled with the same or a neutral liquid.

Weight: 2.2. lb. approx. (1 kg)

Material: V4A Steel, DIN 1.4571

In running media the float can be stabilized by two guiding cables.

Order Code: SCHWIMMER-200MM



# POSIWIRE® Accessories for WS® Position Sensors



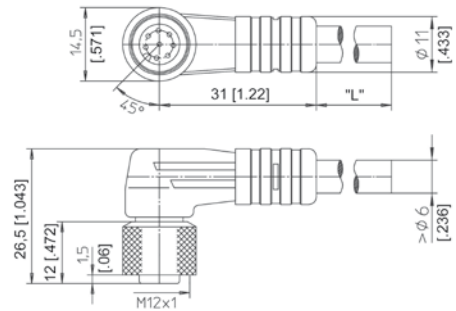
**Connector cable  
for WS® position  
sensors**  
8 pin M12

The 8-lead shielded cable is supplied with a mating 8-pin 90° M12 connector at one end and 8 wires at the other end. Available lengths are 6.6 ft. (2 m), 16.4 ft. (5 m) and 32.8 ft (10 m). Wire: AWG26.

Order code:

**KAB - XM - M12/8F/W - LITZE**  
**IP69K: KAB - XM - M12/8F/W/69K - LITZE**

Length in m



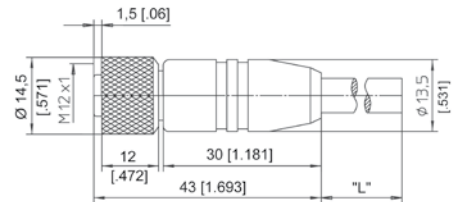
**Connector cable  
for WS® position  
sensors**  
8 pin M12

The 8-lead shielded cable is supplied with a mating 8-pin M12 connector at one end and 8 wires at the other end. Available lengths are 6.6 ft. (2 m), 16.4 ft. (5 m) and 32.8 ft (10 m). Wire: AWG26.

Order code:

**KAB - XM - M12/8F/G - LITZE**  
**IP69K: KAB - XM - M12/8F/G/69K - LITZE**

Length in m



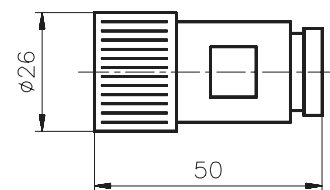
Connector cable wiring - M12, 8 pin	Connector pin / cable color							
	1	2	3	4	5	6	7	8
	White	Brown	Green	Yellow	Grey	Pink	Blue	Red

**Connector for WS®  
position sensors**  
12 pin CONIN

Female connector.

Order code:

**CONN - CONIN - 12F - G**



# POSIWIRE® Accessories for WS® Position Sensors



## Connector/bus cable for WS® position sensors

5 pin M12  
CAN bus/DeviceNet

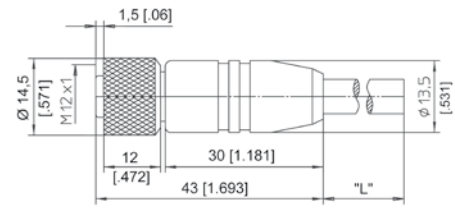
The 5-lead shielded cable is supplied with a female 5-pin M12 connector at one end and a male 5-pin M12 connector at the other end. Available lengths are 0.98 ft. (0.3 m), 6.6 ft. (2 m), 16.4 ft. (5 m) and 32.8 ft (10 m).

Order code:

**KAB - XM - M12/5F/G - M12/5M/G - CAN**

**IP69K: KAB - XM - M12/5F/G/69K - M12/5M/G/69K - CAN**

Length in m



## T-piece for bus cable

5 pin M12  
CAN bus/DeviceNet

Order code:

**KAB - TCONN - M12/5M - 2M12/5F - CAN**



## Terminating resistance

5 pin M12  
CAN bus/DeviceNet

Order code:

**KAB - RTERM - M12/5M/G - CAN**

