

Outline of the 9267 SAFETY TEST DATA MANAGEMENT SOFTWARE

Test Types and Corresponding Test Instrument

- Insulation Withstand Test: 3153/3159/3158 (withstand voltage only)
- Protective Conductivity Test: 3157 • Live Line Testing: 3332

Test Sequence Operation

The above three tests can be performed in any desired sequence. However, the same test should not be performed more than once. Also, at least one of the tests must be performed.

Interface for connecting test instruments to the PC RS-232C only

(Multiple test instrument can be connected through a commonly available multiplexer.)

Test Data Recording

Test results are recorded as a specified text file (in CSV format).

Connection Switching Function

Connections can be switched prior to each test by sending commands to the PLC (programmable logic controller).

ID Number Management

ID numbers can be managed for test targets.

Automatic ID Incrementing

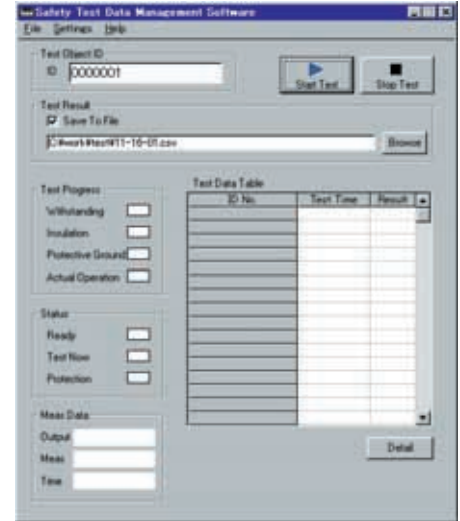
ID Number Digit Count Setting

ID Header Appending Function

3153 Program Setting

A program setting screen is provided for the 3153.

Program setting can be saved as or loaded from text files.



[Load Data]



[Program Setting]

Step	Step	Step	Step	Mode	Volt	R/R/Relay	Time	Upper	Lower
1	Enst	1-1	1-COM W	AC50	02	OFF	03	01	OFF
2	Enst	1-2	1-COM W	AC50	02	OFF	03	01	OFF
3	Enst	1-3	1-COM W	AC50	02	OFF	03	01	OFF
4	Enst	1-4	1-COM W	AC50	02	OFF	03	01	OFF
5	Enst	1-5	1-COM W	AC50	02	OFF	03	01	OFF
6	Enst	1-6	1-COM W	AC50	02	OFF	03	01	OFF
7	Enst	1-7	1-COM W	AC50	02	OFF	03	01	OFF
8	Enst	1-8	1-COM W	AC50	02	OFF	03	01	OFF
9	Enst	1-1	1-COM W	AC50	02	OFF	03	01	OFF
10	Enst	1-2	1-COM W	AC50	02	OFF	03	01	OFF
11	Enst	1-3	1-COM W	AC50	02	OFF	03	01	OFF
12	Enst	1-4	1-COM W	AC50	02	OFF	03	01	OFF
13	Enst	1-5	1-COM W	AC50	02	OFF	03	01	OFF
14	Enst	1-6	1-COM W	AC50	02	OFF	03	01	OFF
15	Enst	1-7	1-COM W	AC50	02	OFF	03	01	OFF
16	Enst	1-8	1-COM W	AC50	02	OFF	03	01	OFF
17	Enst	1-1	1-COM W	AC50	02	OFF	03	01	OFF
18	Enst	1-2	1-COM W	AC50	02	OFF	03	01	OFF
19	Enst	1-3	1-COM W	AC50	02	OFF	03	01	OFF
20	Enst	1-4	1-COM W	AC50	02	OFF	03	01	OFF
21	Enst	1-5	1-COM W	AC50	02	OFF	03	01	OFF
22	Enst	1-6	1-COM W	AC50	02	OFF	03	01	OFF
23	Enst	1-7	1-COM W	AC50	02	OFF	03	01	OFF
24	Enst	1-8	1-COM W	AC50	02	OFF	03	01	OFF
25	Enst	1-1	1-COM W	AC50	02	OFF	03	01	OFF
26	Enst	1-2	1-COM W	AC50	02	OFF	03	01	OFF
27	Enst	1-3	1-COM W	AC50	02	OFF	03	01	OFF
28	Enst	1-4	1-COM W	AC50	02	OFF	03	01	OFF
29	Enst	1-5	1-COM W	AC50	02	OFF	03	01	OFF
30	Enst	1-6	1-COM W	AC50	02	OFF	03	01	OFF

[Save Program Setting as Text]