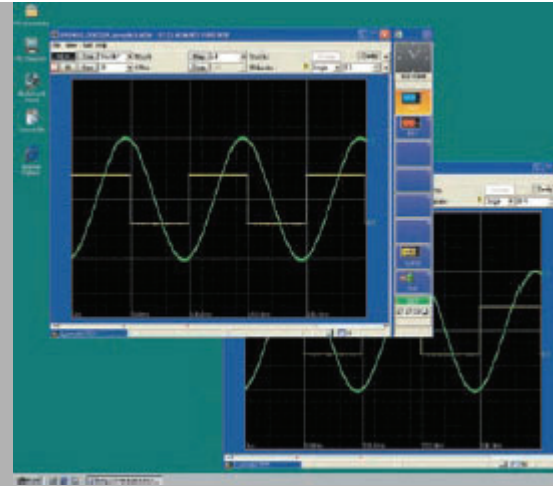


MEMORY HiVIEWER 9725


[OVERVIEW](#)
[Version Upgrade](#)

Perform 8860 Series functions on your PC

- Application software enables you to perform the same data analysis on a Windows computer as on the 8860 Series MEMORY HiCORDERs.
- No confusion, because the screens appearing on the computer are identical to those of the 8860 Series.
- Functions identical to those of the 8860 Series, such as waveform processing calculation, run on the computer.

Basic specifications

Compatible devices	MEMORY HiCORDER 8860 Series
Supplied Media	One CD-R disc
Operating environment	Computer running under Windows 2000, Windows XP (32bit), Windows Vista (32-bit), or Windows 7 (32-bit/64bit)
File loading	Readable data formats : Only for 8860 Series data (.MEM, .REC, .SEQ, .IDX, .SET, .FFT) Maximum file size : 2 GW
File saving	Saved contents: measurement data (binary and ASCII), (partial saving of the area between cursors A and B), setting conditions, screen image (BMP, PNG), and calculation results
Display	<ul style="list-style-type: none"> • Waveform display: 1-, 2-, 3-, 4-, 6-, and 8-split screen, horizontal, vertical, consecutive scroll, and zoom in/out along the time axis, move the zero position, zoom in/out, setting of variables independently for each channel • X-Y-axis composite display (for the MEM function only): 1-, 2-, and 4-split display, dot/line interpolation, composite area can be specified • Numerical display: digital values of waveform data can be displayed • Display sheet: 16 sheets • Display channel count (per sheet): 32 analog channels, 16 logic channels, 16 calculated waveforms, 8 X-Y-axis composite waveforms • Cursor function: vertical cursor, horizontal cursor, trace cursor, two cursors (cursor A and cursor B), time and voltage display • Clipboard copy: images on the waveform screen can be transferred to the



Print

clipboard

- Supported printer: printer compatible with the OS
- Print format: waveform image (1-, 2-, 3-, 4-, 6-, 8-, and 16-split), numerical print, report format, list print, calculation results, screen image
- Print area: the entire area, area between cursors A and B
- Print preview